

THE BODIE TIMES

PROTECTING BODIE'S FUTURE BY PRESERVING ITS PAST

THE NEWS OF BODIE, MONO LAKE & GROVER HOT SPRINGS

www.BodieFoundation.org

VOLUME X

SPRING 2017

NUMBER 1

December Earthquakes Damage Bodie's Buildings

By Brad Sturdivant
BF Executive Director

Over the past several years, Bodie has lived up to its history of "Bad Men, Bad Whiskey and the Worst Climate Out-of-Doors." The Bad Men and Bad Whiskey may have ended, but the worst climate is alive and well. In past years, winds over 200 mph have hit our fair city, collapsing buildings, tearing roofs apart, breaking windows and toppling brick chimneys.

On December 28, 2016, a series of earthquakes shook the area approximately 14 miles from Bodie. Those quakes, registering 5.7, 5.7, and 5.5 magnitude on the Richter Scale caused considerable damage. The park



Powerful earthquakes in December 2016 shook open a hole on the west side of the DeChambeau Hotel. **Photo by Brad Sturdivant**

was closed to visitors immediately afterwards.

A 3.6 magnitude quake rattled the area again several weeks later.

From my trip to Bodie soon after

the first series of quakes, it appeared the DeChambeau Hotel had suffered the most noticeable damage. The DeChambeau is a large two-story brick structure located on the south end of Main Street. There were visible cracks on the west side of the structure both inside and outside. A hole, approximately two by three feet, opened on the west side, with bricks thrown inside and out. Shelves were knocked over, stacked bed frames shifted from one side of a room to the other, and supports fell on a historic mailing shelf from the days when the DeChambeau was a post office.

A few brick chimneys had toppled over and others were twisted, but

Please see EARTHQUAKES page 6

Winter Storms Bury Bodie and the Sierra

Photos By Eric Draper



Bodie had one of the biggest winters in many years in 2016-17. Weather forecasters pointed to the "Atmospheric River," which brought a steady flow of moisture to California and the Sierra Nevada. All that precipitation was welcome as it brought an end to much of the drought in the state. The biggest storms, in January and February, did cause travel problems, as winds and heavy snowfall shut down mountain passes and Highway 395 several times. Storms continued into March and April and added to the Bodie and Sierra snowpack, but did not impact travel in the Eastern Sierra as much as earlier in the year.

Executive Director's Report

Still Moving Forward

By Brad Sturdivant



Brad Sturdivant

The end of 2016 marked the sixth year the Bodie Foundation has been working in partnership with California State Parks, and year nine since we first filed for our 501 (c) (3) non-profit status. We have come a long way, and we are still moving forward and making progress. Although, sometimes it seems the wheels are spinning and we need four-wheel-drive. We have a few projects on the burner that have been there a few years.

First on the list is the Railroad Office Project. Thanks to our membership and donors, we raised over \$160,000 toward a new building foundation. This amount exceeds the \$150,000 it was originally expected to cost. Funds raised are in a restricted account awaiting an implementation plan to proceed. We had expected this project would take about three years to raise funds to proceed. As things turned out, it was just shy of two years. We are still receiving funds for the project through private/public tours and donations. We are hoping to see some work soon, perhaps this coming fall.

Another ongoing project is the Bodie Cemetery Project. You may remember we were using human remains detection dogs to locate unmarked gravesites? This project began back in 2008 when I was still working for State Parks. Recently, we received a draft copy of drone flyover photography conducted in fall 2015. We continue to receive donations toward the Cemetery Project and there is still work to be done on

Please see EXECUTIVE DIRECTOR page 6

Meet the Foundation's New Bookkeeper

Karen Hutchins has joined the Bodie Foundation staff as our bookkeeper.

"I am truly delighted to be a part of the Bodie Foundation team," said Karen. "I have a deep love for Bodie, animals and the great outdoors."

Some members may have met Karen already as she has helped at past Bodie events. In her spare time, she enjoys working in the yard and riding her quad.



Karen Hutchins

THE BODIE TIMES

The Bodie Times
is the official publication of the Bodie
Foundation, P.O. Box 278, Bridgeport, CA
93517

(760) 647-6564

Comments, stories and photographs are
welcome.

Please email to:

Chris@BodieFoundation.org

COPYRIGHT 2016

ALL RIGHTS RESERVED

Benny Romero *Board President*

Brad Sturdivant *Executive Director*

Terri Geissinger *Business Mgr.,
Historian & Guide*

Chris Spiller *Editor*

Jessica Horn *Production & Design*

Shayla Geissinger *Project Manager*

Betty McCunniff *Office Assistant*

News Briefs

Ghost Walks Sold Out

Bodie's Ghost Walks, scheduled this year for June 24, July 29 and August 26, are sold out. However, the park will still be open from 9 a.m. to 10 p.m. on those dates for all to enjoy Bodie's night skies. There is a free "Star Stories" program open to the public as well on these three nights. Park admission is \$8 per adult, \$5 for children 3-17 years old. We thank our members for their support! Tell your friends who are not yet members to join so they can get in on early ticket sales next year.

Attorney Needed

The Bodie Foundation is seeking an attorney to assist its board of trustees in its work as a non-profit cooperating association supporting Bodie State Historic Park and its sister parks, Mono Lake State Tufa Natural Reserve and Grover Hot Springs State Park. For more details, please contact Terri@BodieFoundation.org.

Climate Seminar Set For June 15

A climate seminar titled, "The High Sierra Responds to a Changing Climate," is scheduled for Thursday, June 15, at the Mono Lake Scenic Area Visitor Center in Lee Vining from 1 - 5pm. The free event is sponsored by 350 Mono as a prequel to the Mono Basin Bird Chautauqua. Speakers at the event include local experts, Connie Millar, Forest Service Scientist, Steve Sadro, UC Davis Limnologist, Martha Davis, Water Policy Specialist, Geoff McQuilkin, Mono Lake Committee, and Caelen McQuilkin, Lee Vining High School.

Goodbye to a Great Friend of Bodie

By Terri Geissinger
BF Business Manager,
Historian & Guide



Albert Pegorare starts the steaks grilling at FOB Day. **Photo by Tom Mullinax**

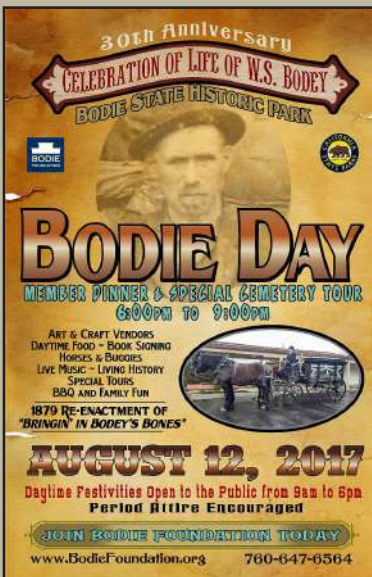
It is with deep sadness we report the death of our dear friend, Albert Pegorare, who passed December 29, 2016. A resident of Bridgeport for 35 years, he was widely known for his generosity, kind heart and community service.

Albert's Meat Market on Main Street in Bridgeport, is an icon for Mono County. Albert and staff served up hefty sandwiches, thick steaks and big smiles. Between BBQing and catering every major local event, including the last 15 Friends of Bodie Days, he served as Fire Commissioner for 25 years and was active in the Bridgeport Chamber of Commerce. He was a true

pillar of the community and will be deeply missed by all. Mike Mooney, a longtime employee, best sums up the integrity and big heart of Albert: "If anyone came through town and had no money, we'd feed them. He'd give people gas money. People in town, if he knew they were short, he'd give them discounts, feed them, no questions asked."

A memorial service for Albert was held January 15, 2017 at Memorial Hall in Bridgeport. The hall was packed with people from all over the region and beyond, who came to pay tribute to a wonderful man who was devoted to friends, family and his community.

Friends of Bodie Day 30th Anniversary to Include Celebration of Life for W.S. Bodey



Friends of Bodie Day on Aug. 12 will be a day to remember as we gather to celebrate 30 years of Friends of Bodie and the life of the man who started it all, Mr. Bodey.

You will not want to miss the re-enactment (11 a.m. & 2 p.m.) of that strange day in 1879, when several men escorted the bones of W.S. Bodey to town. The discoverer of gold in these hills had died in a snowstorm 20 years earlier and his remains were buried in an unmarked grave. You will hear the story of Bodey's demise from several perspectives and perhaps solve the mystery of the "Bones of Bodey" as we celebrate with music, food and special tours.

The members' evening program will be full of soul stories as the cemetery comes to life. You don't want to miss out, so be sure to RSVP as soon as you receive your invite. Last year, this event was sold out and we anticipate that this year's event will sell out too!

Photo Days are Back!

Photographers wanting to capture beautiful morning or evening light in Bodie now may sign up for privileged access on four dates this summer: June 17, July 15, September 16 and October 14.

Access includes 30 minutes before sunrise or 30 minutes after sunset, depending on dates listed below. Photographers receive an all-day pass for \$100 per person and all park rules and regulations apply. All proceeds fund critical stabilization projects. The number of passes are limited, so please purchase your passes soon.

Sunrise access will be permitted on June 17 and September 16. Sunset access will be available on July 15 and October 14.

To purchase passes, please go to www.bodiefoundation.org or call (760) 616-0559. Capture the mysterious beauty of Bodie in the morning or evening!

For photographers interested in booking photo workshops, please contact Shayla at PhotoWorkshop@BodieFoundation.org or (760) 616-0559.

Become a Mono Lake Volunteer This Summer



The 2016 graduating class of Mono Lake Volunteers.
Photo by Karen Gardner

Train to be a volunteer at Mono Lake this summer and share your knowledge of the Eastern Sierra with visitors from all over the world!

Volunteers are very important to the visitor experience. There are opportunities to rove and answer questions at the shore and/or the visitor center, guide group tours, and help with trail maintenance and weed removal.

An eight-hour commitment per month is requested June through September. Participants must be at least 18 years old, able to walk short distances and stand for two hours in sunny locations.

A free training session for prospective volunteers take place June 2-4 at the Mono Lake Scenic Area Visitor Center. Friday and Saturday sessions run from 9 a.m. to 4 p.m. and Sunday's session is 10 a.m. to 5 p.m. Volunteers are required to attend all training sessions. Please contact Jessica Horn at jessica@monolake.org or call 760-647-6595 for information or to sign up.

The training is sponsored by the Mono Lake Committee, U.S. Forest Service, California State Parks, The Bodie Foundation and The Eastern Sierra Interpretive Association.

After Wet Winter, Mono Lake on the Rise

Editor's Note: Thank you to our friends at the Mono Lake Committee for the following information.

Mono Lake will rise in 2017. The Mono Lake Committee's March forecast has the lake rising almost 2.4 feet in the lowest scenario and reasonably expects a 2.4-foot rise this year by September. This would be a three-foot increase in lake

level over September 2016.

Remarkably wet winter conditions raised Mono Lake over a foot since December 2016. As of April 1, Mono Lake's surface elevation is 6378.3 feet above sea level. This exceeds past forecasts based on average conditions and is in line with the 20 percent of wettest scenarios discussed in the fall.

Bird Chautauqua Registration Underway

Registration started April 15 for the 16th Annual Mono Basin Bird Chautauqua, set for June 16-18, 2017 in Lee Vining, CA. This popular event brings birders together to enhance appreciation and understanding of the Mono Basin's diverse and abundant bird life, and to educate the public about this area's value to

birds and people. This year's event offers over 90 field trips, workshops, and presentations with renowned bird guides, naturalists and artists.

Register online soon at www.birdchautauqua.org as workshops fill quickly.

Tour the Wonders of Mono Lake

Bird Walks

Sundays and Fridays at 8 a.m., Mid-May through early September:

Meet some of the feathered denizens of the Mono Basin on this easy stroll through wetlands, willows, and cottonwood trees. Meet at the Mono Lake County Park (Five miles north of Lee Vining, just east of Hwy. 395). 1.5-2 hours.

South Tufa Walk

Daily at 10 a.m., 1 p.m., & 6 p.m. late

June through Labor Day in Sept.

Discover the mystery of Mono Lake's strange water and wildlife. Meet at the South Tufa kiosk (Five miles east of Highway 395 on Highway 120). 1.5 hours (entrance fee required). 1 p.m. walks on weekends only may be offered in May and September.

Birding By Ear

8 a.m.-noon certain days in June.

Call the park office for more information, (760) 647-6331.

Panum Crater Walk

Saturdays and Sundays at 10 a.m., June through August.

Explore the secrets of one of the most recent volcanoes to rock the Eastern Sierra. Wear sturdy shoes. Meet at Panum Crater parking lot (Four miles east of Highway 395 on Highway 120). 1.5 hours.

Stars Over Mono

Mondays, June through Labor Day

Please see MONO TOURS page 5

After a Big Winter, Grover Ready for Spring



The Friends of Grover Hot Springs (FOGHS) is ready for spring and summer with new books and other items at its store at Grover Hot Springs State Park. The

Visitor Center/Gift Shop will be open Mid-May through September from 10 a.m. to 6 p.m. Mark Pupich, Visitor Center Manager, is starting

a native plant garden at the Visitor Center, having developed planting beds last fall. This spring, he plans to start plants from seeds and transplants. And, he is also

working on plans for an interpretive panel kiosk next to the Visitor Center.

Also, the Bodie Foundation / Friends of Grover Hot Springs is funding a Seasonal Interpretive Specialist Position at Grover this summer to help with Grover's interpretive programs.

At press time, Grover was preparing for its 2017 Earth Day celebration. The event includes volunteers working on such projects as invasive weed pulling and watershed restoration. The event is organized by the Alpine Watershed Group with a grant from the California State Parks Foundation.

Pool Hours

Because pool hours fluctuate so much at Grover Hot Springs, please see the Grover Hot Springs State Park page at the California State Parks website. The information also has other pertinent information about the park. www.parks.ca.gov/?page_id=508

MONO TOURS from page 4

(call for times, which vary monthly). Enjoy an evening of stargazing and stories with the dark skies of the Mono Basin. Meet at the South Tufa kiosk (Five miles east of Highway 395 on Highway 120). Bring a blanket or chair and warm clothes. More than 50% cloud cover will cancel the talk. 1.5 hours.



This winter's snowfall resulted in two beautiful winter and spring views of the Hot Springs Creek waterfalls, usually referred to at Grover Falls. **Photos by Mark Pupich**

EARTHQUAKE from page 1

remained upright. (The only chimney that appeared to remain in good shape was one restored after a 2006 wind storm sent it tumbling to the ground. A long-time donor contributed the \$6,200-plus to return it to its former condition.) Other buildings saw considerable damage as well. Bottles fell and broke in the IOOF Hall, Sam Leon Bar and the J.S. Cain House. At the Boone Store, a large front window lay in pieces. Of major concern to State Parks and the Bodie Foundation, is the status of the Bodie water system. The 50,000-gallon water storage tank is dry. Attempts to refill and get water running again initially failed, leaving the park without running water for weeks. As one park employee said: "It takes a lot of melted snow to flush a toilet."

DIRECTOR from page 2

concrete and metal enclosures. This will be very expensive, and cost more than has been raised to date.

Our Photography Workshop program continues to raise about \$40,000 annually. We put these funds into the Bodie Stabilization Project, also known as SAVE BODIE! This account has a couple of sub-accounts; one a memorial fund for a special friend, Chuck Fell, who passed away last fall; and what we call the Earthquake Fund. All funds are to keep Bodie from falling down, but still make it look like it is.

In other news, we hired a bookkeeper, Karen Hutchins, in 2016.

A series of earthquakes rumbled through the area at the end of December. State Parks is still working on water system problems as a result. We are told there is now some water back to employee housing.

Friends of Bodie Day was one of the biggest, especially from a parking standpoint. It all went off without too many hitches. We keep running out of coffee. Who's in charge of that? Hope you had the opportunity to attend and we look forward to seeing you this coming August 12, 2017.

What's Up in 2017?

Besides earthquake recovery, feet of snow, then inches of rain, then

more snow, snow cat breakdowns and postponing of Bodie Foundation meetings, we are as busy as ever. We have already said goodbye to two founding members of the Board of Trustees due to term limits: Nancy Frye, long-time vice-president and yours truly, long-time President. Benny Romero was elected president of the board and Jessica Horn, vice-president. Four new members of the Board of Trustees were elected March 31: Paul Friezen, Pattie Hughes, Dan "Mac" McIntyre, and Douglas Urbani.

Also on tap this year, is a benefit concert on June 10 at the Bridgeport Barn and Terrace. The featured performers are Dave Stamey, along with Jon and Betsy Elliott. Tickets are on sale now.

This year marks the 30th anniversary of our Friends of Bodie Day event. Imagine, 30 years. It will be our opportunity to thank all of you for helping to keep a part of the American frontier alive. While you're here,

As The Bodie Times went to press, the park re-opened, but there is no running water and only four pit toilets. It is hoped the Bodie Museum will be open by Memorial Day Weekend (May 27-29). Until then, bookstore items are for sale at an office in the J.S. Cain House.

Despite earthquakes, heavy snowfall, and high winds, Bodie, for the most part, is still standing. It will need a lot more help this coming year.

(Editor's note: Donate to the Bodie Earthquake Repair Fund online by clicking the Green Button at our home page, www.bodiefoundation.org or, mail checks to the Bodie Foundation, P.O. Box 278, Bridgeport, CA 93517. Make checks payable to the Bodie Foundation and note on the check: Earthquake Repair Fund. For questions, contact Terri Geissinger at Terri@BodieFoundation.org)

take some time to visit the other state parks we help support, Mono Lake Tufa State Natural Reserve and Grover Hot Springs State Park.

Thanks to all of you for the time, talent and treasure you have given to help the Bodie Foundation with past and future successes.

Take a Private Tour with the Bodie Foundation

By Chris Spiller
Bodie Times Editor



There's nothing more frustrating than arriving too late to catch the last history talk or Stamp Mill tour of the day at Bodie. Or, finding out there's not enough room on the tour for your family and friends. What if you could arrange for a certain time and day for a tour with no worries of a tour filling up? Consider signing up

for a private tour led by Bodie Foundation tour guides.

Private tours are an ideal solution for professional conferences, college groups, clubs and other organizations that want to be assured of a tour being available for a group on a certain day.

Private tours can be designed to suit a group's special interests in Bodie.

Private Stamp Mill tours spend about one hour in the stamp mill area with the other hour consisting of a "Town Tour," which reveals the history of this remarkable town. At the stamp mill, your group will learn how the ore from the mines was crushed and about the dangers of working amid the loud, heavy stamps. Groups may choose at the time of their reservation to have the Stamp Mill section of the tour conducted in a Living History format, where your

guide takes you back in time to imagine what it would be like to work in the stamp mill in the early 1900s.

Learn more about mining history on the Mines, Mills, Rails and Ruins tour. This is a four-hour driving tour of the Mining District, which is off-limits without a guide. Learn how fortunes rose and crashed swiftly in Bodie's boom years and hear about the surprising people who continued to live and work in the mining district after the boom. Participants must have a high-clearance, 4-wheel drive vehicle for this tour. Please note, there is no access to mines on this tour.

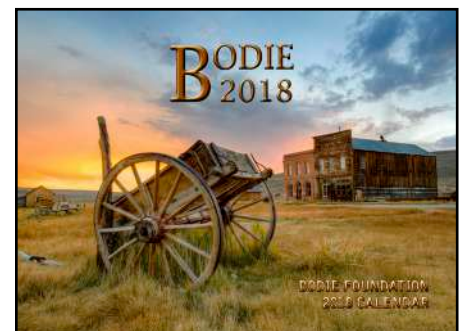
Your group may want to experience the town as evening approaches with a "Twilight Tour." This two-hour walking tour of town delves deeper into the history of the people of Bodie.

Please email Terri@BodieFoundation.org to start the reservation process for a tour your group will always remember. Reservations for private tours must be made in advance. Start planning your special Bodie adventure now!



New Calendar Available

The 2018 Bodie Calendar is now on sale for \$11.95 at the Bodie Foundation online store, www.bodiefoundation.org/store/. Over 300 entries for the annual contest were voted upon by a team of judges. Thank you to all our entrants and congratulations to the winners. The cover photo of Main Street was taken by Ryan O'Keven. Other photographers with winning images included Scott Morgan, Jeff Dean, Kathy Triolo, Dan Murnan, Steven Friedman, Mitchel Johnson, Jeff Sullivan, Greg Lugo, Shahr Klein, Matt Taylor, Gigi Dean, Christine Spiller, Paul Cockrell and Laura Donahue.





Bodie Foundation
PO Box 278
Bridgeport, CA 93517
(760) 647-6564

BodieFoundation.org
info@bodiefoundation.org



Your renewal means you continue to be a part of Bodie's future!
 Join or renew online at www.BodieFoundation.org,
 or fill out and return this form:

- \$35 - Pay Dirt
- \$50 - Silver Vein
- \$75 - Gold Mine
- \$100 - W. S. Bodey
- \$250 - Teamster
- \$601 - Lifer
- \$5000 - Benefactor
- \$_____ - Donation

NAME:	_____
ADDRESS:	_____
CITY:	_____
STATE, ZIP:	_____
PHONE:	_____
EMAIL:	_____

To support Friends of Grover Hot Springs or Friends of Mono Lake, please visit the websites below:
www.visitgroverhotsprings.org
www.visitmonolake.org

Please send to:
 BODIE FOUNDATION
 P.O. BOX 278
 Bridgeport, CA 93517

Please make checks payable to:
 BODIE FOUNDATION

Bodie Foundation 2017
 Photo by Paul Cockrell