
FRIENDS OF BODIE NEWSLETTER

Volume 7 Issue 1

Spring 1997

Executive Secretary's Message

Well ... where do I start ... ?

Winter 1996 to date in 1997

Heavy snow came late to Bodie during the winter of 95/96. It wasn't until late February that Bodie received a thick blanket of white that remained into May.

The fall of 1996 began as it ended in the spring ... snowfall totals of 2 ft. in October, 2 ft. in November and 4 ft. in December.

The fall of 1995 was the first time that I had seen it rain in November. This year it has rained not only in November ... but in December and January as well. Most of you may be aware that the rains on top of snow caused a considerable amount of flooding statewide. US Highway 395 washed out through Walker Canyon 18 miles north of Bridgeport. Traffic has been routed through Nevada ... by-passing Walker/Coleville and returning to HWY 395 at Bridgeport. Bodie suffered through these storms. Total to date approximately \$18,000 in wind damage.

The Good News: Acquisition

Acquisition of 517 acres of property to the east of Bodie is still in the works. There are still some difficulties with who actually owns the mineral rights and which parties get how much money. If the purchase does finally happen we are considering a rededication of Bodie SHP sometime this summer. We will keep you informed as this progresses.

Interpretation

Walt Stone, a long time seasonal employee at Bodie will be our first full time interpreter. The Friends of Bodie will be paying for the position. We hope to be able to provide a consistent interpretive schedule with increased mill tours.

Calendar

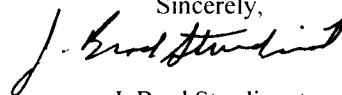
The Friends of Bodie produced its first calendar. It is for 1998. Some of you have already made a purchase. Plenty are still available. We have already begun work on a 1999 calendar. Our thanks to Jill Lachman. She put a lot of time and effort into this project. We hope she continues to work with us on future projects.

Stabilization

We continue to receive funds to keep Bodie together. Funding is also available for emergency stabilization of the structures within the proposed acquisition. A meeting to determine what needs to be done will be held this spring.

Our thanks to you all for your support. We hope to see you at the Friends of Bodie Night this summer.

Sincerely,



J. Brad Sturdivant

FRIENDS OF BODIE NIGHT ONCE AGAIN A SUCCESS

by Julia Hayen

On October 5, members of the Friends of Bodie gathered in the County Barn to celebrate the 4th annual Friends of Bodie Night. Over 80 members were present to share in the festivities.

The evening began with the premiere of the 30 minute movie *The Gold Seeker*, filmed entirely in Bodie. It is the short story of a miner that has struck it rich only to return to an abandoned and lonely ghost town. The movie was filmed in 1959.

This was followed by a hot dog roast with delicious salads and desserts provided by generous FOB members.

After dinner, the membership was addressed by the Executive Secretary, J. Brad Sturdivant and updated on several issues of interest to the FOB membership. Of primary interest were the state of the purchase of land adjacent to the park and plans of the Bodie Railway and Lumber Co. Those attending were also brought up to date on FOB happenings.

The membership was then treated to a visit from the prominent Bodie citizen, James Stuart Cain (park aide Walt Stone) as he reminisced about some of the pranks he played on fellow Bodieites.

The evening was concluded with period folk music that might have been heard in Bodie. Chart toppers included Turkey in the Straw and Old Joe Clark. Music was supplied by Ranger Jack Shipley on hammered dulcimer and recorder, maintenance worker Charlie Spiller on mandolin, and Sue Mehrhoff on flute and banjo.

Available at FOB Night were commemorative T-shirts. They were very popular and I want to thank all of the members who helped support FOB in this way, as well as all who were able to share in the evening.

As happens in Bodie, even our early October date was a bit chill. To prevent a future occurrence, we're hoping to have FOB Night in late August for more seasonal temperatures and to make it easier for FOB's with families to share in the fun.

FROM WHERE I SIT (NOTES FROM THE MUSEUM DESK)

by Julia Hayen

The Bodie museum welcomed over 188,000 visitors from all over the world in the last year.

Visitors were able to get a closer look at the Bodie artifact collection and our sales area.

A number of additions have been made to our sales area. Thanks to FOB member Steve Eigenberg we are now able to sell a reprint of the 1878 book *Bodie and Esmeralda*. This short book gives a brief account of the history of these two mining districts, abstracts of mineralogical reports, and descriptions of mines and stamp mills in these districts.

Aurora: Ghost City of the Dawn is a short informative book on Bodie's sister city in Nevada. It is a wealth of information and pictures about a town that does not exist today.

The Friends of Bodie is please to announce the sale of the new 1998 full color calendar with 16 images of Bodie in all seasons. Thanks to Jill Lachman for all of her hard work in putting this calendar together. I also want to thank all of the members who pre-ordered these beautiful calendars. I hope all are as satisfied as we at the park.

Also introduced was a new postcard. Like the others we carry, it is an historic black and white photo of the town.

Coming soon, Bodie will offer two distinctive hat pins. One, picturing the Methodist Church, will commemorate the 35th anniversary of Bodie State Historic Park, the other will celebrate the park with a view of prominent buildings on Main Street..

Due to the increasing number of books we are carrying, we have expand the sales area with another bookcase.

I hope everyone will have an opportunity to visit the park this year, stop by the museum and say hello.

Julia volunteered at Bodie during the summer of '93. Since then she has worked here as a park aide, and for the past two years has been involved in the museum operation.

STABILIZATION IN BODIE

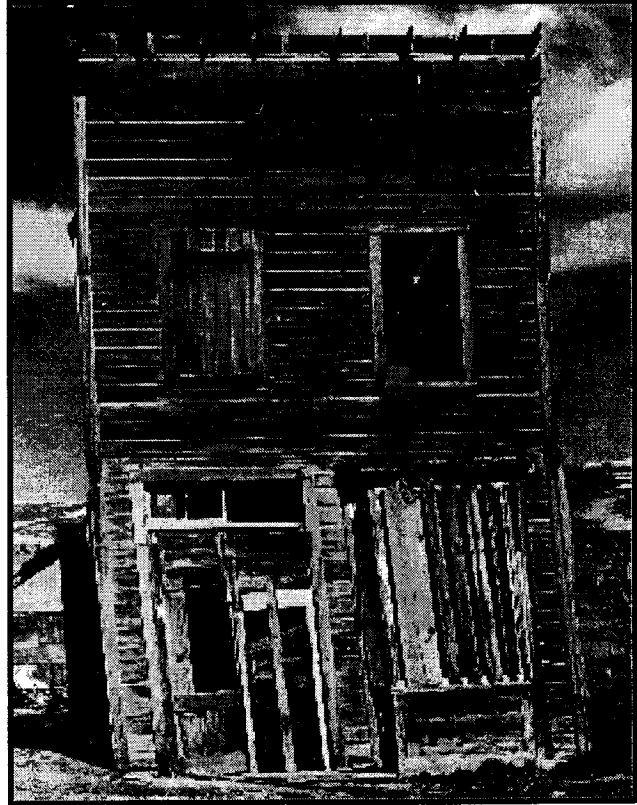
by Mark Pupich

Building stabilization in Bodie was in full swing this summer. With funding from the Environmental License Plate Fund (ELP) we have been able to get a lot accomplished these past two years. Over the last several years the Division of State Architect (DSA) has been sending out a crew every summer to do stabilization work. The crews were small and their time and money was limited. With the additional funding from ELP we have developed a second stabilization crew made up of State Park Maintenance staff. The lead person on this team is Maintenance Mechanic Chuck Fell, under him are three Maintenance Workers, Mike Whitsel, Charlie Spiller, Dan Rybicki, and Maintenance Assistant Jim Anthony. During this last year they accomplished stabilization work on ten historic buildings in Bodie. Those buildings included the Dr. Street House, Swazy Hotel, Metzger House, Bob Bell's Assay Shop, Campana House, Dechambeau Hotel, Standard Mill Assay Shop, Tracy House, and two other unnamed houses.

The stabilization work often includes doing foundation work, replacing flooring, reframing walls, replacing windows and repairing the roof system. Most of Bodie's buildings are made of wood, but a few, like the Dechambeau Hotel, are made of brick which require tedious and time consuming masonry stabilization. Existing historic materials are used when possible, and when it does become necessary to use new materials we try to match them to the historic materials as closely as possible. We are attempting to freeze Bodie in time, keeping it in the condition it was in when the townsite became a state historic park back in 1962, therefore, it is sometimes appropriate to use later 20th century materials and methods on buildings that were in place at the time Bodie became a park.

The experienced DSA crew has also continued to work in Bodie during the summer. They spent much of the summer repairing the rock walls of the O'brian Warehouse. Again, this is tedious and time consuming work.

If you have visited Bodie during the Spring, Summer and Fall of the last few years you may have seen an increase of green and khaki uniformed personnel working around buildings and hauling materials around the townsite. We apologize for the intrusion on the ghost town atmosphere, and hope you understand that this work is necessary in order to perpetuate this important historic resource we call Bodie.

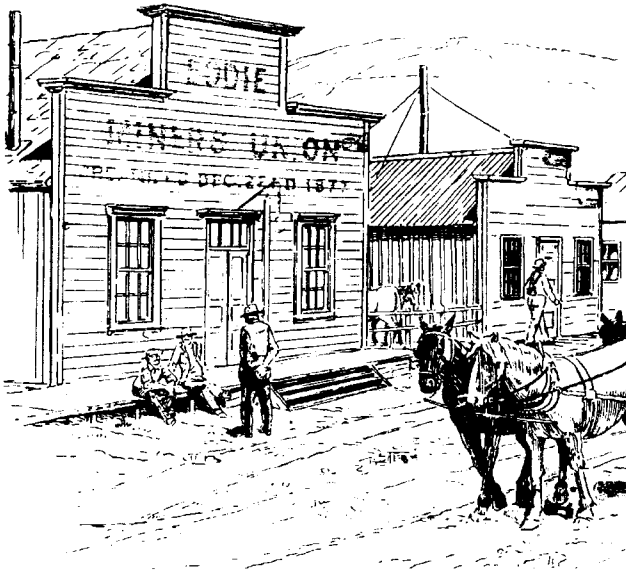


Swazy Hotel

1996 SURVEY RESULTS

We had 56 people respond which was a great response! We appreciate your time spent filling the surveys out. They will help give us direction and new ideas.

There were many great ideas for special events and fund raisers ... historic resource protection was highest on your priority while a new visitor center not being as critical ... it was almost a tie as far as wanting or not wanting more interpretive programs, and some excellent suggestions for new programs and interpretive facilities.



THE MINERS' UNION HALL

by Mark Pupich

By 1877 the Bodie mining district was drawing serious attention from the mining and investment capitalists. New mines were opening up the ground on Bodie Bluff, High Peak and Silver Hill at a prodigious rate, people from all walks of life were flooding into the small valley nestled high in the Trans-Sierras north of Mono Lake, and new businesses seemed to be sprouting up daily in the new boom town with the same name as the mining district.

The mine companies employed many men -- miners being the most numerous positions available in the sub-terranean work place. The pay of \$4 dollars a day was good pay relative to other labor positions, but it was dangerous work. Mining accidents were common and a need for safer working conditions brought about the formation of a miners' union. In December of 1877 the Bodie Miner's Union was organized. There were 190 registered members by November of 1878. The Miner's Union was instrumental in bettering working conditions. Through union dues and fund raising, it also paid benefits to members and their families if a miner became sick, injured or died. The union maintained its own cemetery plot, paid the funeral cost for their members and had its own meeting hall.

By June of 1878 a Miner's Union Hall was under construction. The Building was located on the west side of Main Street, south of the Green Street intersection. The Hall measured 30 feet wide, by 70 feet long. The cost of construction was \$8,000.

The Union Hall was not only used as a meeting place for the Miners' and Mechanics' Unions, but was also a popular place for dances, recitals, and other social occasions. The social orders and firemen gave monthly and annual balls and dances in the building as fund raisers for their organizations. Before the Methodist and Catholic churches were built in 1882 church services were often held in the Hall. There was a raised platform and back drops constructed at the back of the hall provided the stage for vaudeville acts, concerts, and the like. Wrestling and boxing events were occasionally held within its walls providing a source of sporting excitement for Bodieites.

During the early 1940s, as Bodie completed its transformation as ghost town, Ella Cain turned the Miners' Union Hall into a museum. Today the Hall still houses artifacts of Bodie's bygone years and opens its doors to nearly 200,000 visitors a year.

WIN

A beautiful framed 20"x 24" photograph by Jan-Ray Images

Drawing will be held July 4, 1997 -- you need not be present to win

All proceeds go to the Friends of Bodie

Tickets: 1 for \$1, 7 for \$5, 15 for \$10

PARK HOURS

8 am -- 4 pm End of Day Light Savings to March 1st

8 am -- 5 pm March 1st to Day Light Savings

8 am -- 6 pm Day Light Savings to first Sat. prior to Memorial Day weekend

8 am -- 7 pm First Sat. prior to Memorial Day w/e thru mid-September.

8 am -- 6 pm Mid-September thru Columbus Day w/e

8 am -- 5 pm After Columbus Day w/e to end of Day Light Savings



BODIE PHOTOGRAPHY WORKSHOPS 1997

The Bodie photography workshops, offered through The Friends of Bodie, provide unique photographic opportunities and instruction. During these workshops the participant will have the opportunity to photograph Bodie at sunrise, sunset, and selected building interiors. A large portion of the proceeds from the workshops go to The Friends of Bodie to help fund management, protection, and interpretation at Bodie.

The leaders of these workshops are professional photographers and experienced workshop leaders. The workshop leaders, tentative dates, and fees are listed below. **For further information and registration please contact the workshop leaders.**

Clinton Smith, P.O. Box 1761 Mendocino, CA 95460, (707) 937-2261

Dates: Call Mr. Smith for dates

Fee: \$225

Bob Cumming, 14090 Flower Street #4, Garden Grove, CA, 92843, (714) 638-9744

Dates: Sept. 8-10, Sept. 11-13

Fee: \$200

Thomas Morse, P.O. Box 30866, Santa Barbara, CA, 93130, (805) 682-3398

Dates: July 14-18, Sept. 14-18

Fee: \$465

Noella Ballanger & Associates, P.O. Box 457, La Canada, CA, 91012, (818) 954-0933

Dates: Oct. 1-5 (2nd & 3rd in Bodie)

Fee: \$300

Jill A. Lachman Photography, 2536 Tahoe, Hayward, CA 94545, (510) 330-4183

Dates: August 22-24, October 10-12

Fee: \$250

MAJOR DONATIONS TO FRIENDS OF BODIE 1996

From Mary McKeough & Anita Gallivan in memory of the Seiler Family -- \$1,000

1998 BODIE CALENDAR

This year we are coming out with our first Bodie calendar. This exciting new calendar for 1998 features photographic images of Bodie taken by the park rangers and photographic workshop leaders. Captured by the unique perspective of these individuals is the beauty and mystery of Bodie. Each month displays a different view of the myriad of Bodie's faces ranging from a snow storm to rainbow over the Standard Stamp Mill. Calendars make great gifts!

Calendars are available for \$10 each plus \$3 shipping for 1-4 calendars to the same address (U.S. priority mail).

FOB members price is \$8 each plus \$3 shipping for 1-4 calendars to the same address (U.S. priority mail).

BODIE CALENDAR ORDER FORM

Calendar (\$10) x _____ = \$ _____ Please make checks and money orders payable to:
FOB (\$8) x _____ = \$ _____ FRIENDS OF BODIE
Shipping (1-4 calendars) = \$ 3.00
Total = \$ _____ Mail order to: Friends of Bodie

P.O. Box 515
Bridgeport, CA 93517

PHOTOGRAPHERS' DAYS

Last summer we had our trial Photographers' Day. During this day photographers were allowed to enter the park 1/2 hour before sunrise and stay until 1/2 hour after sunset. We did not get a big turnout, which was good for the photographers who did participate. We received favorable feedback and plan to have a Photographers' Day one day each month during the summer. We will limit it to 50 people and the cost will be \$30 (\$20 for FOB members). They will be held the third Saturday of each month starting in May and ending in October. Reservations are required. For further information and reservations contact Bodie at (619) 647-6445.

CALENDAR COMPETITION

The Friends of Bodie invites all artists, amateur and professional, working in the photographic medium to participate in its first annual calendar competition.

CALL for ENTRIES

The calendar competition is open to all photographers working in the medium of color photography, either traditionally produced or computer generated residing in the United States. Only original artwork, created solely by the artist, may be submitted. All work is to be submitted in 35mm slide or larger transparency format. Do not send originals. Jurying and production will be done from submitted work, use quality production duplicates. The subject matter for this calendar is the Eastern Sierra ghost town of Bodie, California.

JURORS

The jurors for this competition will be the resident Rangers of Bodie State Historic Park.

HOW to ENTER

Photographers may submit a maximum of five (5) images, at \$5 per transparency. All fees are non-refundable. Each slide is to be labeled with the following information: Top, artist name, media, title, date completed/copyrighted. All works to be submitted in transparency (slide) form in 35mm or larger format. All work must be in color. No glass or metal slides, please.

Make check payable to: Friends of Bodie, P.O. Box 515, Bridgeport, CA 93517

Send submissions to: 1999 Calendar, the Friends of Bodie, P.O. Box 515, Bridgeport, CA 93517. All entries must be postmarked by June 1, 1997.

Enclose fee, labeled slides/transparencies, and SASE for notification and the return of non-selected slides/transparencies.

AWARDS

An honorarium of \$100 will be paid to each photographer whose work is chosen for inclusion in the calendar.

CONDITIONS

Images will be used by the Friends of Bodie solely for calendar purposes. All rights retained by photographers. Each photographer will be asked to sign an agreement stating that the image(s) will be used on a one-time basis and not as an exclusive to the Friends of Bodie. If no SASE is included for notification and return of non-selected work the work becomes the property of Bodie State Historic Park.

LIABILITIES

Transparencies will be handled with all possible care, but the Friends of Bodie will not be held responsible or liable for any damaged from any cause whatsoever. Entering this competition constitutes an understanding and agreement on the part of the artist/photographer with all conditions stated.

SCHEDULE

June 1, 1997 - Postmark deadline for submissions

August 15, 1997 - Return of notification and non-selected work

Mid-September, 1997 - calendar design and production

Early December, 1997 - 1999 calendar ready for distribution

JOB ANNOUNCEMENT

BUSINESS MANAGER SEASONAL FRIENDS OF BODIE BODIE STATE HISTORIC PARK \$7.25 to \$8.19/hour

Bodie State Historic Park is seeking qualified applicants for Business Manager. This position will be paid by the Friends of Bodie under the supervision of a State Park Ranger II and Unit Ranger. The position will be responsible for operation of the museum sales area, greeting visitors to the museum/visitor's center, and clerical duties as necessary. Position will be approximately 6.5 months (mid-April to November 1). Dormitory housing is available.

MINIMUM QUALIFICATIONS:

High school diploma or equivalent. Solid general math skills. Desire to work with the public. Cashier experience desirable.

DUTIES:

Sales: Will transact sales, stock shelves, track inventory, re-order stock, process wholesale and retail orders by mail. Responsible for daily and monthly accountability as well as year end sales summary. Responsible for bank deposits. Will supervise and train one employee.

Visitor Contact: Will greet visitors, answer questions about park past and present, explain and enforce park rules, answer requests for information by phone and mail, publicize park hours and special events.

General Clerical: General paperwork associated with Friends of Bodie, update memberships and send renewal letters. Other tasks designated by rangers or necessary for smooth operation of museum and Friends of Bodie. Act as radio dispatch for rangers in Bodie/Mono sector.

Applications and resumes will be accepted on the Standard California State Application and are due **NO LATER THAN March 1, 1997** to Bodie State Historic Park P. O. Box 515, Bridgeport, CA 93517. You may contact Bodie at (619) 647-6445 or FAX (619) 647-6486.

JOB ANNOUNCEMENT

MUSEUM ASSISTANT SEASONAL FRIENDS OF BODIE BODIE STATE HISTORIC PARK \$7.10 to \$7.91/hour

Bodie State Historic Park is seeking qualified applicants for Museum Assistant. This position will be paid by the Friends of Bodie under the supervision of a State Park Ranger II, Unit Ranger, and Business Manager. The position will be responsible for operation of the museum sales area, greeting visitors to the museum/ visitor's center, and clerical duties as necessary. Position will be approximately 5 months (mid-May to mid-October). Dormitory housing is available.

MINIMUM QUALIFICATIONS:

High school diploma or equivalent. Solid general math skills. Desire to work with the public. Cashier experience desirable.

DUTIES:

Sales: Will transact sales, stock shelves, track inventory, and process retail orders by mail. Responsible for daily accountability and bank deposits.

Visitor Contact: Will greet visitors, answer questions about park past and present, explain and enforce park rules, answer requests for information by phone and mail.

General Clerical: General paperwork associated with Friends of Bodie, update memberships. Other tasks designated by rangers or necessary for smooth operation of museum and Friends of Bodie. Act as radio dispatch for rangers in Bodie/Mono sector.

Applications and resumes will be accepted on the Standard California State Application and are due **NO LATER THAN** March 1, 1997 to Bodie State Historic Park P. O. Box 515, Bridgeport, CA 93517. You may contact Bodie at (619) 647-6445 or FAX (619) 647-6486.

JOB ANNOUNCEMENT

SEASONAL PARK AIDE
CALIFORNIA STATE PARKS
BODIE STATE HISTORIC PARK
\$7.10/hour

Bodie State Historic Park is seeking qualified applicants for Park Aides. These positions will be under the supervision of a State Park Ranger II and Unit Rangers. There are three positions, May 15 through Labor Day, June 15 to mid-September, July 1 to mid-October. Dormitory housing is available.

MINIMUM QUALIFICATIONS:

Willingness to work with the public in a friendly and courteous manner, talk in front of groups, and foot patrol for 1 to 2 hours at a time. Must be in good physical condition, have strong basic math and speaking skills.

DUTIES:

Entrance Station (Kiosk) Operation -- Collect fees and provide general information to the public.

Foot Patrol -- Patrol the townsite looking for violations, giving information to the public and reporting damage.

Interpretation -- Giving history talks and/or stamp mill tours.

Fire Suppression -- Basic wildland and exterior building firefighting.

Resources Management -- Assist Ranger with resource protection projects.

Applications and resumes will be accepted on the Standard California State Application and are due NO LATER THAN APRIL 1, 1997 to Bodie State Historic Park P. O. Box 515, Bridgeport, CA 93517. You may contact Bodie at (619) 647-6445 or FAX (619) 647-6486.

FRIENDS OF BODIE MAIL ORDER LISTING

Send mail orders with payment to:
 BODIE STATE HISTORIC PARK
 P.O. BOX 515, BRIDGEPORT, CA 93517

Make checks or money orders out to "**Friends of Bodie**". Prices include sales tax and postage.

Orders from outside the U.S.A. add \$3.00 per book to the regular price. Send Postal Money Order only.

If you are a Friends of Bodie member you may order using the FOB discount price.

BOOKS	REGULAR PRICE	DISCOUNT PRICE
Bodie Brochure	2.00	2.00
Aurora	8.50	7.20
<u>Bodie 1859 -1900</u>	16.50	13.70
Bodie and Esmeralda	5.00	4.00
<u>Bodie Bonanza</u>	16.50	13.70
<u>Bodie Boom Town, Gold Town</u>	8.50	7.20
Bodie SHP Resouce Mgmt. & General Development Plan	8.00	6.90
California Historical Landmarks	15.50	12.90
California State Parks, A Visitor's Guide	18.75	15.50
California's Eastern Sierra - A Visitor's Guide	20.75	17.10
<u>Ghost Town of Bodie</u>	10.75	8.60
Ghost Towns and Mining Camps of California	17.50	14.50
Great Bodie Activity Book (<i>children</i>)	6.00	5.20
Guide to Bodie	13.50	11.30
Gunfighters, Highwaymen & Vigilantes	18.75	15.50
Highest School in California	8.50	7.20
Man From Mono	14.50	12.10
Mark Twain: His Adventures in Aurora & Mono Lake	10.50	8.80
Mining Camp Days	16.50	13.70
Mono Diggings	16.50	13.70
Nevada Ghost Towns	18.50	15.30
Paiute, Prospector, Pioneer	12.75	10.80
Photographing Bodie	9.50	8.00
Rosa May	14.50	12.10
Sagebrush Country	17.75	14.70
Soiled Doves	15.50	12.90
<u>Story of Bodie</u>	15.50	12.90
Story of Early Mono County	15.00	12.40
Trip to Bodie Bluff	7.50	6.40
Women of the Sierra	15.50	12.90
<i><u>Underlined books specifically Bodie history</u></i>		
Historic Bodie Newspaper Reprints (Set of 3)	5.00 set	4.30
Posters (Please note your selection)		
Angel, Miner's Union Hall, View up Green Street, or Winter	10.50 each	9.00
1880 Map of Bodie	10.00	8.70
Calendar: 1998 color calendar with 16 images of Bodie	13.00	11.00
Postcards: Set of 5 (Town, Church, Wheel, School & Miners' Union)	2.50 set	2.50
Bodie video: "Bodie -- Ghost Town Frozen in Time"	33.00	27.00
Hat Pins: Bodie Main St., Church	5.00 each	4.20

I believe Bodie has a future and I want to be a part of it! Enroll me as a Friend of Bodie in the category checked.

Name _____

Address _____

City _____ State _____

Zip _____

Membership

\$20 Copper

\$35 Silver

\$50 Gold

\$100 W.S. Bodey

\$250 Life

Renewal

Donation, without membership.

Please send information on how I can volunteer my time.

Bodie State Historic Park

P.O. Box 515

Bridgeport, CA 93517