

THE BODIE TIMES

PROTECTING BODIE'S FUTURE BY PRESERVING ITS PAST

THE NEWS OF BODIE, MONO LAKE & GROVER HOT SPRINGS
www.BodieFoundation.org

VOLUME XI

SPRING 2018

NUMBER 1

Bodie Gets New Water Plant

By Matt Green

Chief Ranger, Sierra District
California State Parks

State Parks staff is always working hard to preserve and protect Bodie. It is also good to remember that rangers also support Mono Lake. The projects listed below are in addition to the everyday duties of our employees, including, but not limited to, making sure systems are running, completing everyday basic maintenance, running entrance stations, conducting tours and protecting the resources and the public, throughout all Eastern Sierra conditions. This is more evident this year with little to no snow which meant the Bodie Road was open to visitors for much of the winter.

Upcoming Projects:

The DeChambeau Hotel is scheduled for stabilization this spring. The total project cost is



Bodie's new water plant uses state of the art, "Supervisory Control And Data Acquisition" or SCADA, which allows the plant to be monitored and adjusted remotely by an operator. The Bodie Foundation contributed \$6,000 to help pay workers on the plant construction and to repair earthquake damage. See more photos on Page 6. **Photo by Graham Payne**

\$412,500. We were very fortunate to receive the funds to repair the damage from the 2016 earthquake. It will be the most expensive stabilization project at Bodie in the

last five to ten years.

The Bodie Railroad Office and the Standard Hoisting Works are scheduled for stabilization this summer by the HistoriCorps. State Parks, with the financial support of the Bodie Foundation, will be contracting with HistoriCorps and their volunteers to complete stabilization projects on the Railroad Office and the Standard Hoisting Works. This is the second year of work on the Railroad Office and the first on the Hoisting Works. State Parks plans to make this an annual stabilization component to our preservation management plans. If successful with this year's projects, Parks would

Please see PARK REPORT page 6

Executive Director's Report Foundation Almost 10 Years Old



By Brad Sturdivant
BF Executive Director

This July 31, 2018 will mark the 10th anniversary of the formation of the Bodie Foundation. In 2008, we moved full speed ahead to get the organization moving.

The necessary paper work was filed with the Federal Government, the State of California and the county

as we formed three organizations as "Doing Business As" (DBA) at various locations. This included Bodie Foundation, Friends of Grover Hot Springs and Friends of Mono Lake Tufa State Natural Reserve. With the help of all our wonderful members, donors, friends and state park partners over the years we have managed to set in motion a great business that will help to support and benefit Bodie, Mono Lake and Grover Hot Springs for many years to come.

Please see ED REPORT page 3

Bodie Foundation Welcomes Three to Board of Trustees

Jon Elliott



Jon has resided in Bridgeport, California for 52 years. For 33 of those years he has lived and worked on the Hunewill Ranch, which has historic ties to Bodie's early days, with his wife Betsy Hunewill Elliott and her extended family.

As a child, he remembers going to Bodie on a house call with his father, a local physician. Helping to preserve and share the history of the area has always held his interest and he looks forward to continuing doing so with this Board.

Beth Olson



An avid outdoors-woman, Beth has been fishing, camping, hiking and riding the Eastern Sierra for over 30 years. She first visited Bodie in the late 1980s and has been fascinated with the history of this area ever since. She travels to the area year-round, and delights in discovering hidden treasures off the main roads while exploring either

by horseback or hiking with her Labrador—imagining the stories to be told behind an overgrown abandoned building, or wondering where a dirt road leads, keeps the area fresh and new with each visit.

Beth has a B.A. in Political Science/International Relations and has worked in Tourism and Hospitality since 1988 with several resort hotels in Santa Barbara, CA. She has an extensive background in destination marketing, sales, and special event planning.

Dave Swisher



Dave was born and raised in Southern California but has traveled to the Mono Basin and Bodie for 38 years. He was raised with a construction background and can use that experience to help at Bodie. His love for the area started with the Bodie Railroad and

spread from there to the town.

He retired two years ago and lives only 14 miles from Bodie. He has traveled extensively in the hills around Bodie in a 1942 Ford WW II Jeep that is still original. Dave is also a member of the Mono Basin Historical Society and he can provide history of the basin and how it involved the town of Bodie.

Taylor Jackson Joins Ranger Staff



Bodie's newest Ranger, Taylor Jackson, grew up in Upland, Calif. where he played water polo and swam competitively. He continued his education at Northern Arizona University where he graduated with a BS in Environmental Science. During this time, he also worked as a Senior Lake Lifeguard for Los Angeles County, primarily at Frank G. Bonelli

Regional Park in Pomona, Calif.

After college he moved into a converted Ford E150 van with his wife Kaytlen and traveled throughout the southwest, rock climbing at every area they could find. Taylor began working at Bodie full-time in September 2017 and has

been able to pursue his passions of backcountry skiing, climbing, running and fly fishing. He and his wife own two dogs, Firenze and Finn, who love the fresh high desert air. Taylor is currently trying out for the Mono County Search and Rescue team where he hopes to put his experience of climbing and guiding to good use. Taylor is proud to call Bodie home and is looking forward to a productive and successful summer season.

THE BODIE TIMES

The Bodie Times
is the official publication of the Bodie
Foundation, P.O. Box 278, Bridgeport, CA
93517

(760) 932-7574

Comments, stories and photographs are
welcome.

Please email to:

Chris@BodieFoundation.org
COPYRIGHT 2018

ALL RIGHTS RESERVED

Benny Romero	<i>Board President</i>
Brad Sturdivant	<i>Executive Director</i>
Terri Geissinger	<i>Business Mgr., Historian & Guide</i>
Chris Spiller	<i>Editor</i>
Jessica Horn	<i>Production & Design</i>
Shayla Geissinger	<i>Project Manager</i>
Betty McCunniff	<i>Office Assistant</i>

2019 Bodie Foundation Calendar



The 2019 Bodie Calendar will be on sale starting Memorial Day Weekend for \$11.95 at the Bodie Foundation online store, www.bodiefoundation.org/store/. Over 180 entries for the annual contest were voted upon by a team of judges. Thank you to all our entrants and congratulations to the winners. You may also purchase the calendar at our new Bodie Mercantile, 323 Main Street Bridgeport, California and at the Foundation bookstore in the Bodie Museum this summer.

The cover photo of the Thomas Miller house kitchen was taken by Gigi Dean. Other winners include Michael Brodey (January), Amy Deakayne (February), Carol Nelson (March), Valerie Simon (April), Paul Cockrell (May), Jeff Dean (June), Greg Lugo (July), Stephen Curtin (August), Mike Tuohy (September), James Gamble (October), Jeff Sullivan (November), Scott Morgan (December), Dawn Davis (interior page), Heather Freeman (interior page) and Betty McCunniff (interior page).

ED REPORT from page 1

And, I'm happy to report that all three units have money in the bank, are prepared to earn more and will continue to support our state parks into 2018 and beyond.

The year 2017 started off with our annual finance meetings and approval of budgets for the Foundation and requests from State Parks. As of the end of 2017 we had contributed directly or indirectly \$153,393.13 to California State Parks. The final numbers are not fully prepared at this time but will be by May of 2018. A special thanks to State Parks for taking on the Railroad Office as a project and writing the contract. And, thank you to HistoriCorps for writing the proposals, getting work crews together and doing the work.

You may ask, in what areas were those contributions spent?

Some went to help provide positions at all three parks, interpretive needs, operational needs at all three parks, exotic species control and volunteer projects. And some helped fund stabilization projects.

More than \$32,000 went to fund work on the Railroad Office Project, while \$6,000 went to help pay workers on the water treatment plant construction and to help repair earthquake damage.

What are we doing in 2018? So far, our finance committee and staff has met and made our recommendations to the Board of Trustees. All budgets and actions were approved

on January 26 and 27 at our annual budget gathering. We met, for the first time, at the new office/business location at 323 Main St., Bridgeport, California. It has been dubbed the Bodie Mercantile with a county DBA in place. Benny Romero, Board President, and I spent several days installing a new floating floor and at this writing are adding the finishing touches. You've probably heard the old saying: trim and molding cover a multitude of mistakes and overcuts. Well, it was not the case here, we were perfect. We also managed to put in a new sink with hot and cold running water, imagine! And we removed a bunch of old shakes and added new cedar shingles. We laughed and groaned a lot. We are not young punksters any more, one of us had to remain standing while one was on the floor cutting. We switched places every so often, so we could help each other stand up. It was great comradery.

The Board also approved three new members to the Board of Trustees. Jon Elliot, Beth Olson, and Dave Swisher. Jon and Dave are from the local area and Beth from Santa Barbara. All with varied backgrounds that will help move the Foundation forward. We said goodbye to Dennis Fisher as a board member and Norm Stump will be terming out this coming April. Dennis has moved out of state. Dennis put together a Conflict of Interest Policy for the Foundation and a supervisory package. Norm plans to continue with interpretive programs and serve on a committee or two or 10. He also served as Secretary and Treasurer for the

Please see ED REPORT page 5

An Osprey Born at Mono Lake Spotted in Texas

By Catherine Jones
State Park Interpreter

An Osprey born at Mono Lake was spotted this winter on Galveston Island, Texas. Galveston Island is 1,500 miles from Mono Lake as the crow flies, or should we say Osprey. The bird was identified by a numbered band that had been placed around its leg during the Mono Lake Osprey nestling banding project in 2015.

Osprey have been annual residents on Mono Lake for many years. The first Osprey nest was spotted atop a tufa tower, offshore from Navy Beach, in 1985. A few years later, that pair had chicks and since then, the numbers of nesting osprey pairs at Mono Lake have grown. Osprey typically nest in close proximity to a food source, i.e., fish-filled lakes. Although Mono Lake has no fish, the tufa formations provide perfect platforms to support their large stick nests. The osprey do not seem to mind the longer flight to catch food from streams and lakes surrounding Mono Lake.

Annual monitoring of Mono Lake Osprey nesting success by State Park biologists began in 2004 and nestling banding began in 2009. State Park biologists, often with the assistance of other raptor researchers, annually survey the Osprey nests and document any new nests. If chicks are present and mature enough, they receive a numbered band around their leg. The numbered bands allow the Osprey to be tracked. Sometimes by a photograph (as in this case), through binoculars, or with the naked eye. Bands can be traced through a central database where information can be gathered about migration patterns and behavior.

Mono Lake Osprey are an amazing sight, often seen perched atop offshore tufa towers. Please remember that Mono Lake Osprey are protected, and boaters must not approach within 200 yards of Osprey nesting sites from April 1 through Sept. 1.



Photo by Deborah Repasz

Explore the Hidden History of Old Marina

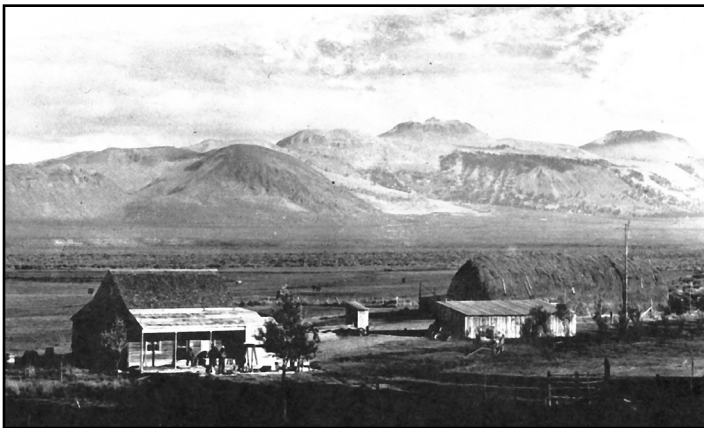


Photo Courtesy of Mono Basin Historical Society

A new summer tour to raise funds for Friends of Mono Lake Reserve (FOMLR) will delve into the cultural history of Mono Lake. Learn about the extraordinary people who lived at the lake over the

years, from the Native people to early pioneers who grew crops and raised livestock, and finally to those here in the later years as the City of Los Angeles began diverting some of the creeks feeding Mono Lake.

The tours are every Friday and Saturday through Sept. 1 at 10 a.m. and 1:30 p.m. Cost is \$10 per person and includes a souvenir history booklet. Tickets can be purchased in advance by calling (760) 932-7574. (There will be no tours June 16, Aug. 10 and 11.)

Meet outside the Mono Basin Historical Society Schoolhouse Museum, 129 Mattly Ave., in Lee Vining. If you wish to pay the day of the tour, please arrive 15 minutes before tour time. Cash/credit cards will be accepted. We will leave the museum 10 minutes after the meeting time to convoy to the Old Marina site. Please wear sturdy walking shoes, bring water, sunscreen, bug spray, jacket, hat and water.



Mark Pupich, volunteer for Friends of Grover Hot Springs (FOGHS) and Hillary Colyer, a state park aide at Grover Hot Springs State Park, offered information on Grover and FOGHS at the Alpine Aspen Festival last October in Hope Valley. This event coincides with the changing fall colors of the Aspen trees. It is hosted by the Alpine Watershed Group and the Friends of Hope Valley. **Photo by Joshua Heitzmann**

ED REPORT from page 3

organization during his 9 years with the board.

The board voted to continue work on the Railroad Office foundation and a roof for the Standard Hoisting Works. Total budget request: \$90,440.50. Work should start on these projects in early June. Once again HistoriCorps will be doing the work.

(The work on the Railroad Office Project is in Phase II. We will be discussing Phase III with State Parks in the near future. This is still an active project and the Bodie Foundation is still seeking donations to continue work on the project for 2019.)

We are also still accepting donations for those structures damaged during the December 2016 earthquake. After sending \$6,000 to state parks to help repair damage, we are still sitting on nearly \$5,000 to help further. Thanks to all of you who have contributed to this fund and we hope you will continue to do so.

If you recall, we had to close down a portion of our photography workshop program in 2017 until we could work out an agreement with State Parks to allow people back into buildings after a park employee fell ill with Hantavirus. Happy to report we have cleared necessary legal and safety requirements to continue the program in 2018.

This coming summer, we will be offering weekly tours at the Old Marina site at Mono Lake Tufa State Natural Reserve starting Memorial Day Weekend. This is something that has been talked about for many years and will now become a reality. We owe a big thank you to Chris Spiller, a former state park employee/interpreter at Bodie. Chris is also Editor of *The Bodie Times* our newsletter (designed

by Jessica Horn of our board). She also puts together our yearly calendar with the help of Roger Vargo of Explore Historic California.

You will be able to purchase tickets for the Old Marina tours on our website and Facebook and via telephone at our new office soon.

I cannot say enough about our membership, donors and partners. This past December we received \$20,000-plus in donations to the cause of preserving and protecting Bodie. We received them from members of the Board of Trustees, private non-profit organizations, and individuals and some unsolicited donations.

With some of these funds the Foundation approved \$2,000 to purchase a trailer for fire protection at Bodie. State Parks will be purchasing a brand spankin' new fire pumper to place on the trailer. Speaking of State Parks, read the article in this issue of *The Bodie Times* by Matt Green, Chief Ranger for Sierra District, regarding the state's role in future projects.

Each year, I try to write the Yearly Plan for the Foundation. It includes what we hope to accomplish at Grover Hot Springs SP, Mono Lake Tufa State Natural Reserve, and Bodie SHP. I've missed a few, but staff knows what needs to be accomplished and we go about the business of making it happen. What I find most amazing, is not what is in the plan, but what Terri Geissinger, Betty McCunniff, Shayla Geissinger, Chris Spiller and our Board of Trustees accomplish each and every year in between what we have in the Yearly Plan. As we all know, each day has a plan all its own.

Thanks again to all our Friends. See you at Friends of Bodie day on August 11, 2018.



Considerable work was done on Bodie's water system last year. The December 2016 earthquake created six breaks in the water lines affecting water supplies in the park. The Rough Creek catch basin/spring box was completely re-sited for the first time in over 27 years and a new water plant was also installed in the park. The final cost for State Parks to complete the project was approximately \$100,000. State Park workers on the project were Crew Leader Juan Lopez and Laborers Robbie Hunzeker and Jason Constant. In photo at right, Constant makes repairs to a leak in town. **Photos by Graham Payne**

PARK REPORT from page 1

have HistoriCorps returning annually to further support State Park staff's efforts to preserve Bodie.

Bodie has a new water system, thanks to our District Restoration Crew. The crew finished a complete rebuild of the antiquated water plant, in addition to several significant water line repairs within the park unit. The fix will allow the continued operation and delivery of fresh potable drinking water to Bodie's approximately 150,000 visitors and its employee residents. It will also support fire suppression systems throughout the park.

Bodie is going Techie!

Thanks to the solid work of our State Parks IT Services Division, Bodie has received a significant upgrade in our internet service, doubling the speed. IT Services installed a microwave dish on the USFS Mono Lake Visitor Center, which sends a signal to a newly installed antenna on the Queen Bee Repeater. The signal is then bounced down to the park. This will not only allow us to have an upgrade of our internet but also our phone system. Bodie will have a Voice Over Internet Provider Service that will transfer all phone service to the upgraded internet, allowing year-round access to all phones in the park unit. This is preceded by a million-dollar capital outlay project that

is scheduled this spring to replace all phone conduit in the park, allowing a substantial upgrade in service to all the park residences. It will help provide greater security for the park, the staff and ultimately expand phone and possible electrical service to our maintenance yard, located approximately one-mile northeast of the historic core.

In addition to new internet and phone services, State Parks will be installing a new entrance station. This will be a considerable upgrade from our existing facility. It will be more employee friendly, better protecting them from the environment and it will also be more convenient and accessible to our visitors. The new Kiosk will also come equipped with an Automated Payment Machine (APM). The APM and the kiosk will be constructed to fit in with the environmental and cultural landscape. The APM will be another added convenience for our customers to pay fees and will allow us greater flexibility with our staff, allowing them to provide more information to our visitors.

New floors and a cleaner environment for our staff, residents and visitors is underway. Bodie will be having a complete replacement of all floor surfaces located in facilities open to the public and our employees. The project is estimated to be approximately \$90,000 and it will greatly improve the safety and lifestyle in the park unit.

These are just a few updates of work happening at the park. The earthquake, historic snowfall and a lack of staff made the past few years more difficult than usual, but that didn't stop our efforts in running and preserving the park. We are hoping to land another Ranger and another maintenance employee this summer. More staff will further support our efforts in continuing our momentum.

Please feel free to call or contact me if there are any questions. Thanks for your help and support.



Volunteers Make a Difference

In 2013, nearly 40,000 volunteers in California State Parks donated over one million hours. Volunteers at Bodie State Historic Park, Mono Lake Tufa State Natural Reserve and Grover Hot Springs State Park, the three parks supported by the Bodie Foundation, contributed to those numbers. In 2017, volunteers at Bodie logged over 700 hours assisting in park operations. Not only do volunteers get to share their passion for the park with visitors from all over the world, they learn more about the park and the surrounding area.

Roving interpretation is a big part of a volunteer's duty. Many visitors gain a greater appreciation of the park after meeting a friendly



volunteer who can answer their questions, share a story, or point them in the right direction. All three parks need volunteers to help

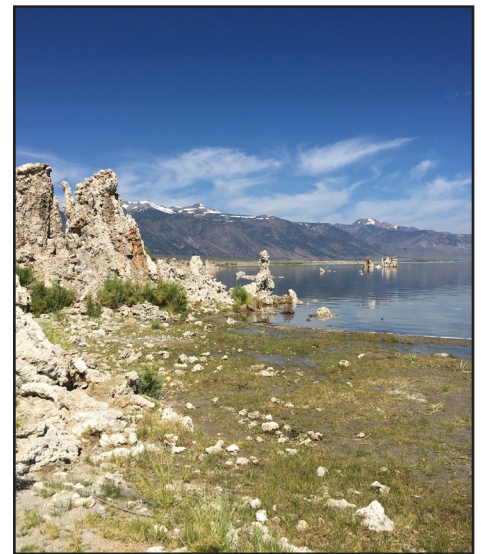
in the visitor centers/museum, present tours (including Stamp Mill tours at Bodie, South Tufa tours at Mono Lake and Nature Walks and Campfire Talks at Grover Hot Springs) and assist Junior Rangers. Other duties can include vegetation maintenance, natural and cultural resource protection and much more.

Volunteers will earn an entry pass to the other parks in the Sierra District for volunteering 50 hours a year and all California State Parks for donating 200 hours a year. If you would like more information on becoming a State Park Volunteer and the application/selection process or training requirements, please email Catherine.Jones@parks.ca.gov or call (760) 647-6445.

Help the Osprey at Mono Lake



Want to help Osprey Conservation? Visit www.visitmonolake.org/projects/ Donations will help fund ongoing conservation work and monitoring for this unique nesting population of Osprey. Past efforts have included banding of young Osprey and deployment of a GPS transmitter on an Osprey to track local and long-distance movement. Make a one-time donation of any amount. **Photo by Dan Shaw**



What's the Lake Level?

As of mid- April, Mono Lake had risen about a tenth of a foot as spring storms brought rain and snow to the region. According to the Mono Lake Committee, the lake is up to its highest level in nearly five years — 6,382 feet above sea level.



Bodie Foundation
PO Box 278
Bridgeport, CA 93517
(760) 932-7574

BodieFoundation.org
info@bodiefoundation.org



Your renewal means you continue to be a part of Bodie's future!
 Join or renew online at www.BodieFoundation.org,
 or fill out and return this form:

- \$35 - Pay Dirt
- \$50 - Silver Vein
- \$75 - Gold Mine
- \$100 - W. S. Bodey
- \$250 - Teamster
- \$601 - Lifer
- \$5000 - Benefactor
- \$_____ - Donation

To support Friends of Grover Hot Springs or Friends of Mono Lake, please visit the websites below:
www.visitgroverhotsprings.org
www.visitmonolake.org

Please send to:
 BODIE FOUNDATION
 P.O. BOX 278
 Bridgeport, CA 93517

NAME:	_____
ADDRESS:	_____
CITY:	_____
STATE, ZIP:	_____
PHONE:	_____
EMAIL:	_____

Please make checks payable to:
BODIE FOUNDATION

Bodie Foundation 2018
 Photo by Kathy Triolo